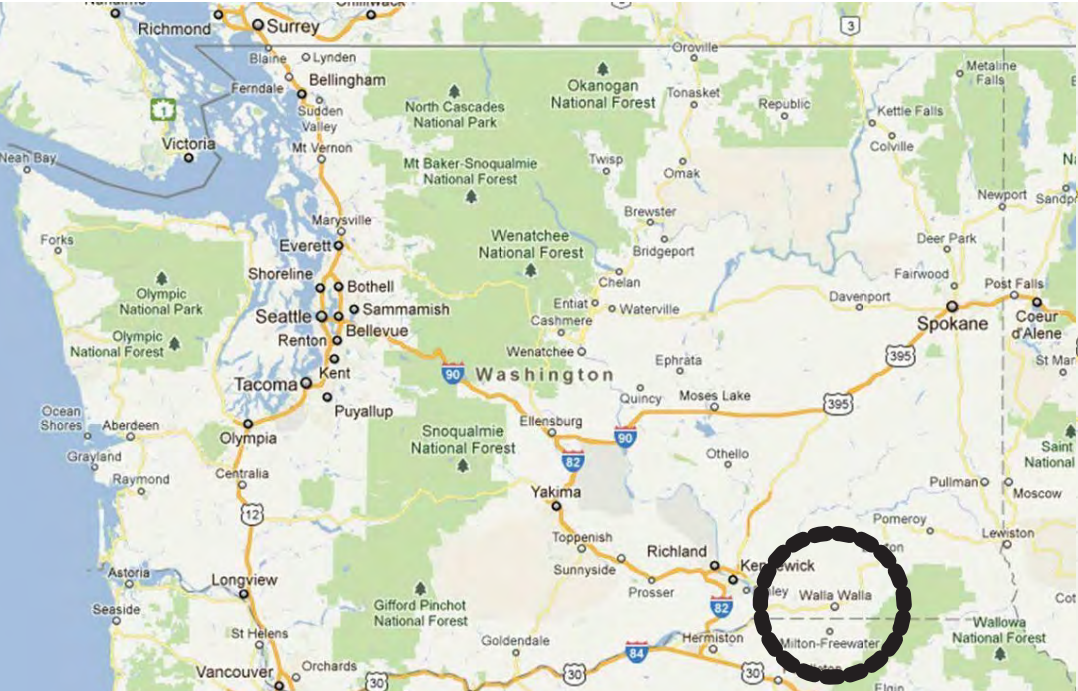
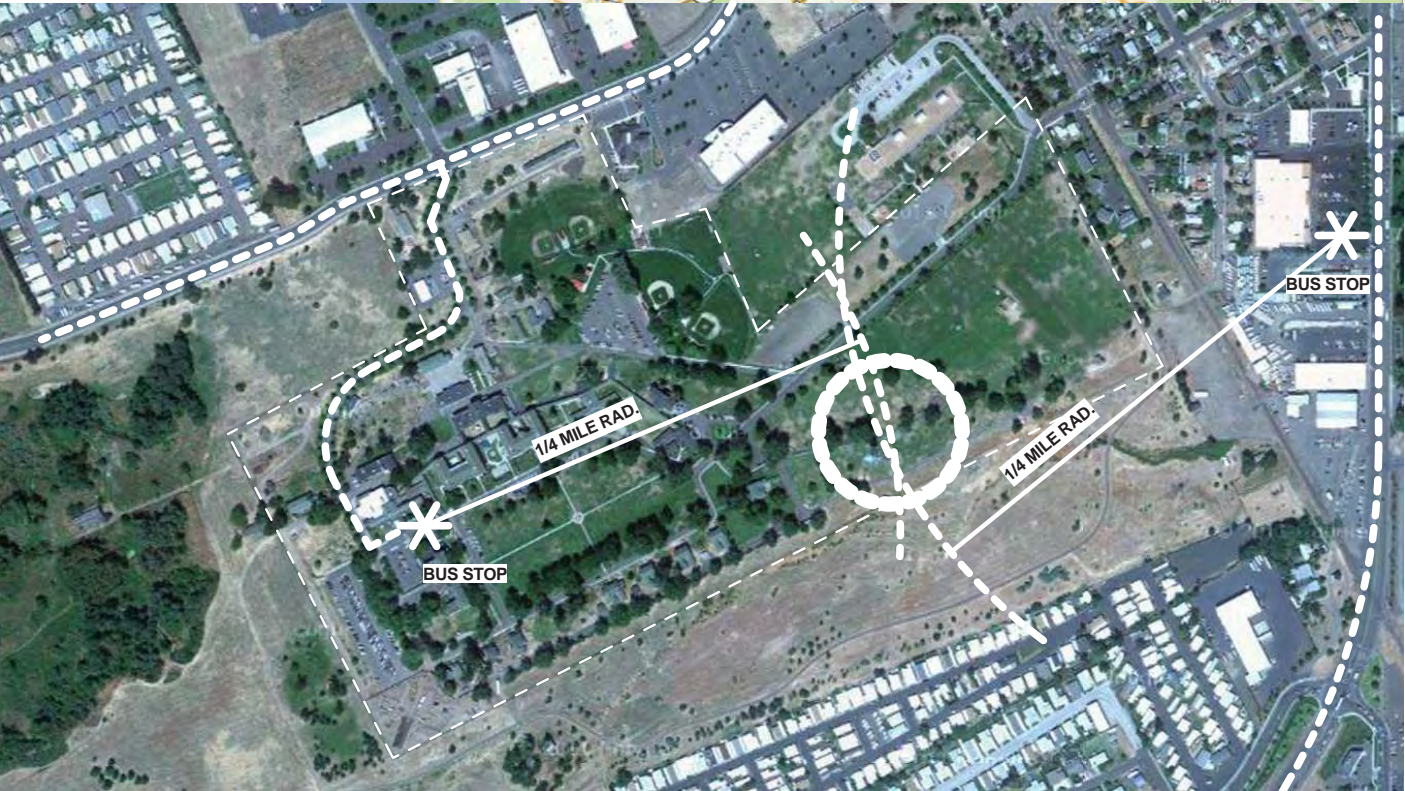
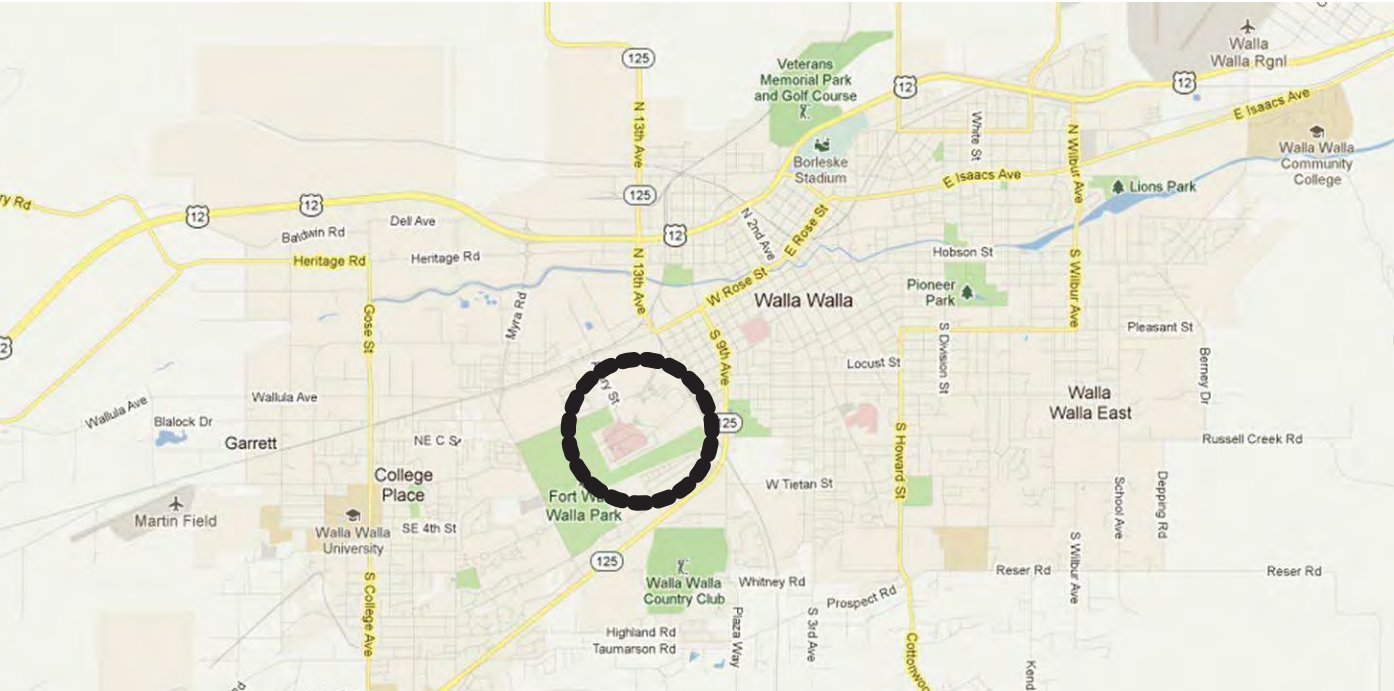


Washington State



City of Walla Walla



Campus of Jonathan M. Wainwright Memorial VA Medical Center

The Walla Walla Skilled Nursing (WWSN) project is an 80-bed, 80,000 gross square feet (GSF) nursing home facility designed around the Federal VA's commitment to a model of care consistent with the "Green House®" model. "It is a place that focuses on life, and its heart is found in the relationships that flourish there. A radical departure from traditional skilled nursing homes and assisted living facilities, The Green House® model alters facility size, interior design, staffing patterns, and methods of delivering skilled professional services. Its primary purpose is to serve as a place where elders can receive assistance and support with activities of daily living and clinical care, without the assistance and care becoming the focus of their existence. The Green House model is intended to de-institutionalize long-term care by eliminating large nursing facilities and creating rehabilitative, social settings."

The WWSN project consists of 8 communal living 'homes' of ten resident rooms each, organized into 4 residential neighborhoods, all served by one common Community Center. Residents do not share sleeping and bathing areas; each resident has his own private bedroom and bathroom. Each ten room home is separated into two – 5 room wings surrounding a common living/dining/kitchen area. Kitchen areas are residentially scaled and designed to encourage residents to participate in cooking activities. Neighborhoods consist of two homes connected together by a common service area consisting of a bathing suite, laundry area and mechanical/electrical rooms. The neighborhoods are connected to the Community Center via enclosed circulation corridors. The Community Center consists of support spaces, such as, Main Reception Area, Staff Office area, Chapel, Large Meeting Area, Barber Shop / Salon, PT/OT, Visiting Doctor's Office, Exam Room, etc.

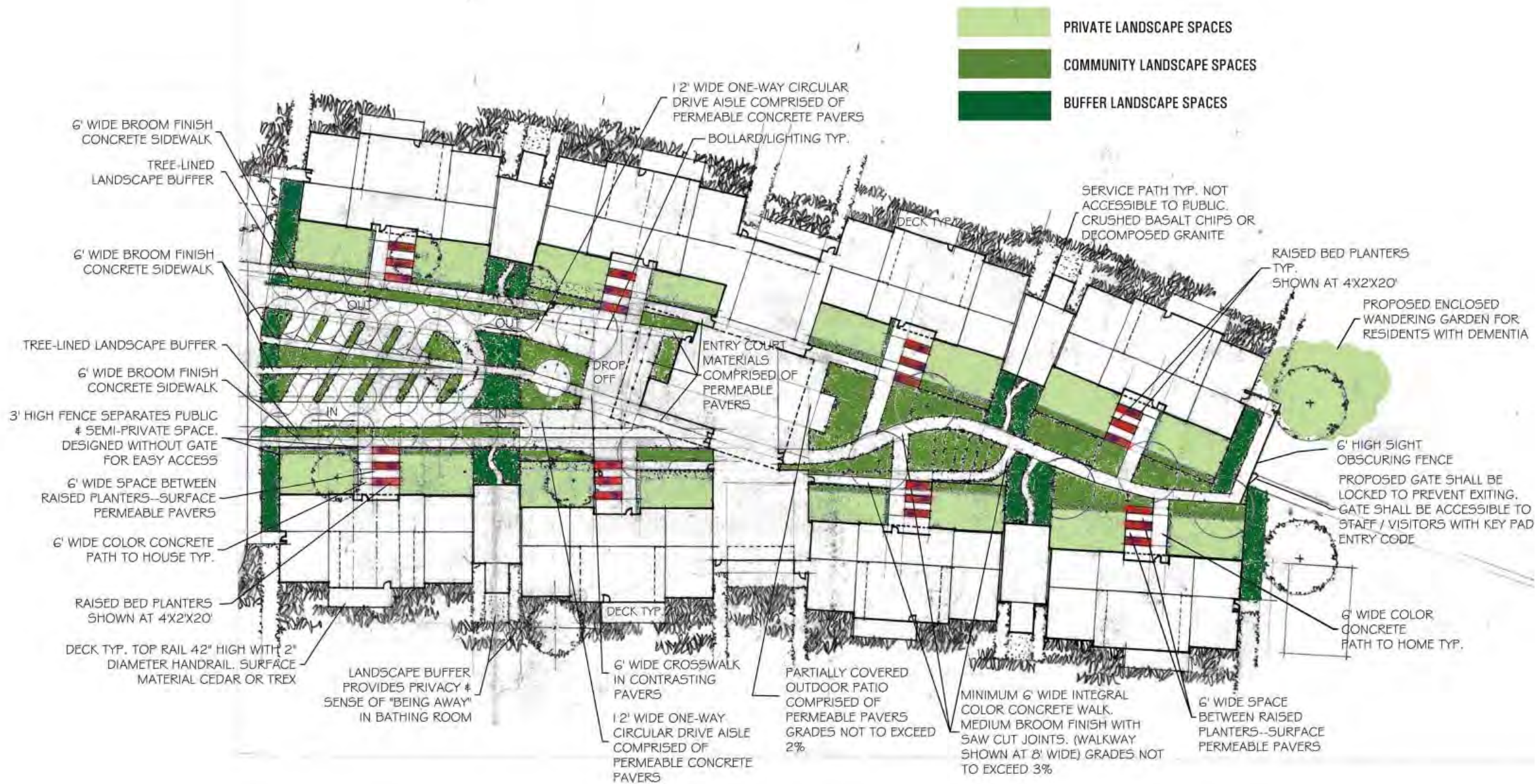
Accessibility compliance is a primary design concern for this facility. All doors along the primary resident circulation areas are equipped with Power Assist Operators (PAOs). We have attempted to identify the actuator locations on the floor plans. Primary circulation path doors are 4'-0" wide as are the doors into the resident rooms. The door into each resident bathroom is 3'-6" wide. In anticipation of the larger, more powerful, motorized wheelchairs and scooters, we have adopted a 5'-6" diameter turning radius in all areas typically designed to be in accordance with the ADA standard of 5'-0". We are incorporating hearing loop features in several of the group gathering areas. We have identified these areas on our plan drawings.

The project design is a work in progress. As a result, the degree of design resolution varies throughout and is reflected in the drawings provided. For example, we have had several meetings to confirm the design of the Bedroom/Bathroom module and the architectural documentation is fairly extensive and complete. (The actual wall and floor finishes are still in progress.) Conversely, the home kitchen areas await critical design discussions with the Department of Health (DOH) and the Department of Social and Health Services (DSHS). We consider the discussion with SFAC to be a working design dialogue. We welcome the insight that the group can offer and are at a point in the design process where appropriate accommodations can still be adopted.













Place Fort Walla Walla Wash., March 1st, 1907 Q.M.G.O. Plan No. ---, Building No. 68

Designation of Building, Barracks, Dbl., Capacity, 2 Troops Cav.  
 Construction: Cost \$ 60,955.00, Date 8/10/06

Material: Walls Brick Foundations Stone,  
 Roof Slate, Floors Hard wood How heated  
Steam (4162 sq. ft. rad.) How lighted Oil

Provided with: Water connections Yes, Sewer connections Yes  
 Water Closets No. 16, Urinals No. 12, Wash Sinks No. 6,  
 Wash Basins No. 24, Laundry Tubs No. 4, Baths; Shower No. 8,  
 Tub No. 6, Screens 136, Storm Sash 0, Storm Doors 0,  
 Wall Lockers No. 130, Total floor area above basement sq. ft. 20,000  
 Dimensions, Main Building 72'x39' Wings 103'x39', Each & every  
 room arranged by floors;  
 1st. Floor 2H, 32'2"x11'7" 2r, 33'2"x36'10" 2Dr, 33'1"x36'10"  
 2K, 22'3"x36'10" 2r, 16'4"x11'7" 2r, 19'10"x11'7" 2r, 11'10"x11'6"



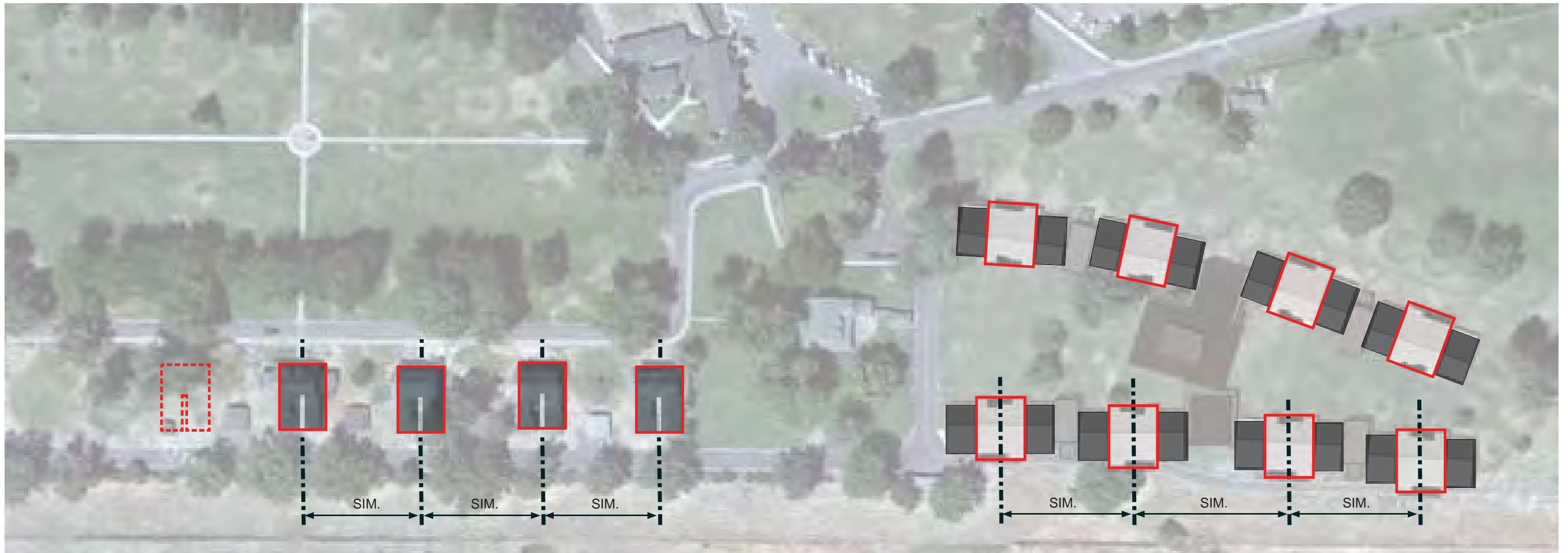




Q.M.G.O. Plan No. 18, Building No. 18... Place... Fort Walla Walla, Wash. ...., March 1st, 1905.  
 Designation of Building, Post School & Chapel, Capacity  
 60 Men.; Construction: Cost \$ . Unknown Date... 1860...  
 Material: Walls... Frame. Foundations..... Brick....  
 Roof... Shingle... Floors..... Wood..... How heated  
 .... Stoves... (....sq ft. rad.), How lighted.... Min. Oil.  
 Provided with: Water connections....., Sewer connec  
 tions..... Water Closets No., Urinals No., Wash Sink  
 No., Wash Basins No., Laundry Tubs No., Baths; Showe  
 No., Tubs No., Screens....., Storm Sash...., Storm  
 Doors....., Wall Lockers No....., Total floor area above  
 basement sq. ft.... 920.....; Dimensions, Main Building  
 23'6"x40'2".... Wings....., Each & every  
 room arranged by floors;  
 1st Floor-1R-23'x40'















	ASPHALT CONCRETE PAVEMENT
	CEMENT CONCRETE PAVEMENT
	CONCRETE PAVER
	CONTRASTING CONCRETE COLOR PAVER

TYPE A

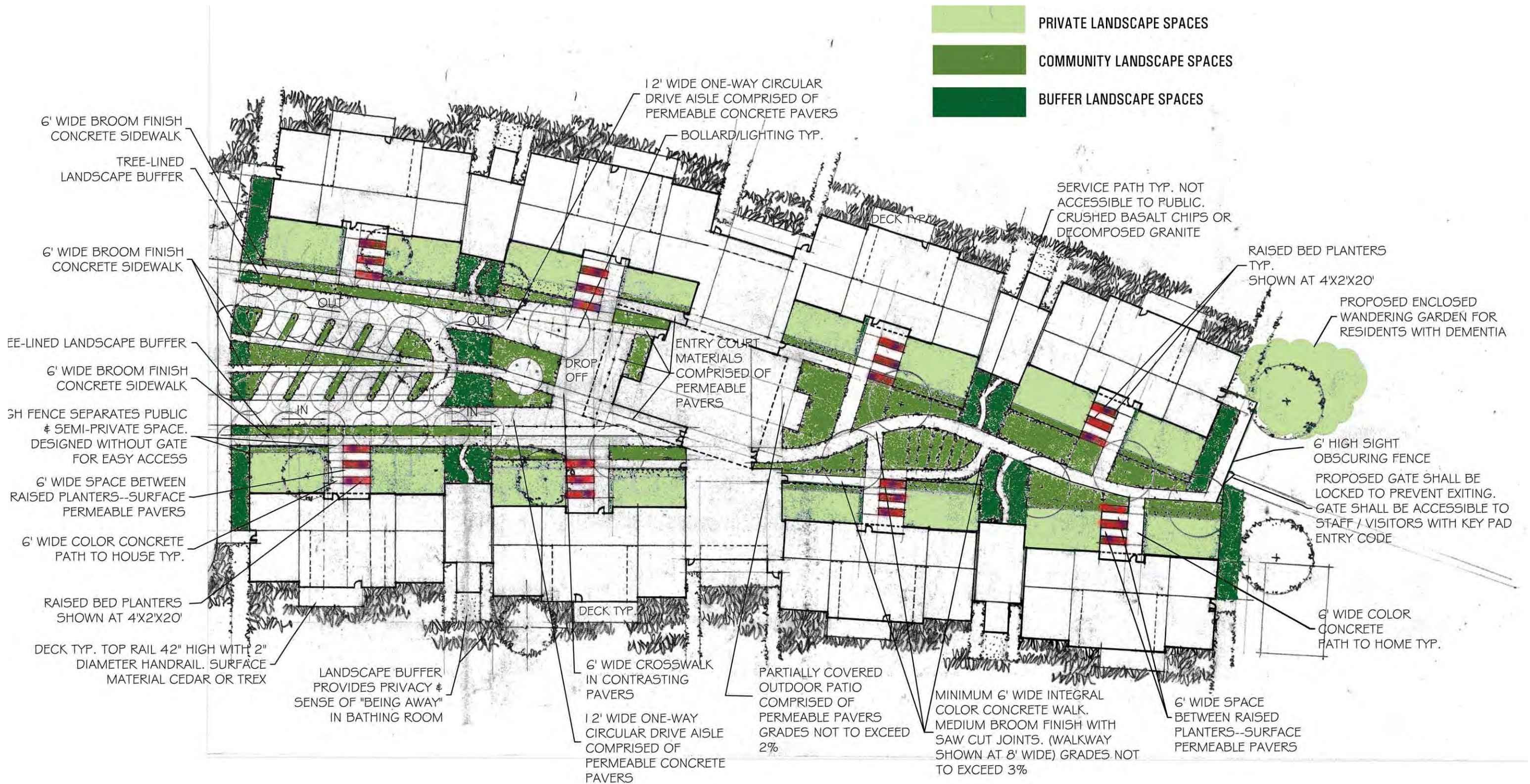
CEMENT CONCRETE CURB RAMP "TYPE  
PERPENDICULAR B" PAY LIMIT ~ SEE NOTE 6

TYPE B

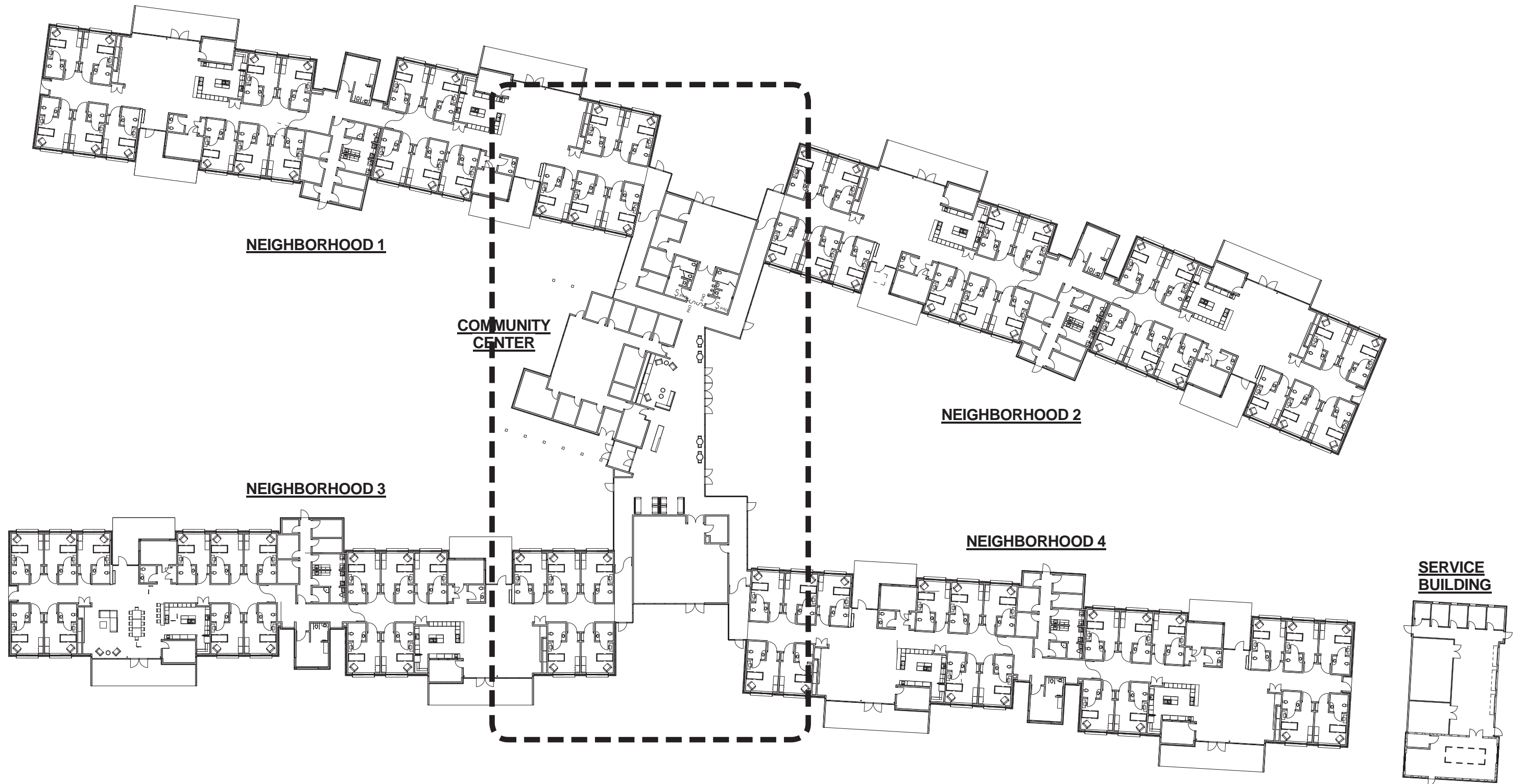
### TYPE A PERPENDICULAR ADA RAMP (TYP)

TYPE B PERPENDICULAR  
ADA RAMP (TYP)

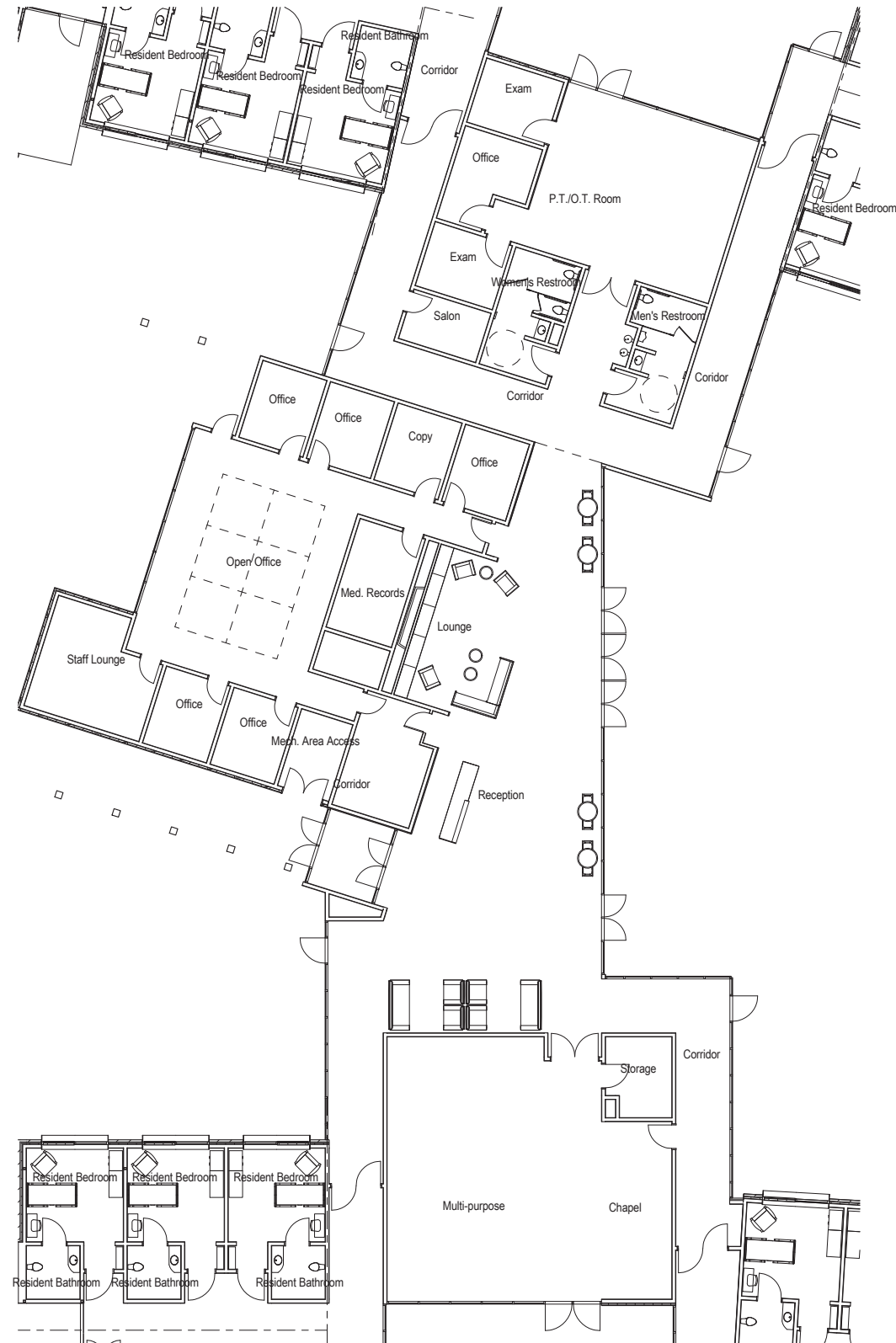
















VIEW TOWARDS COMMUNITY CENTER ENTRY





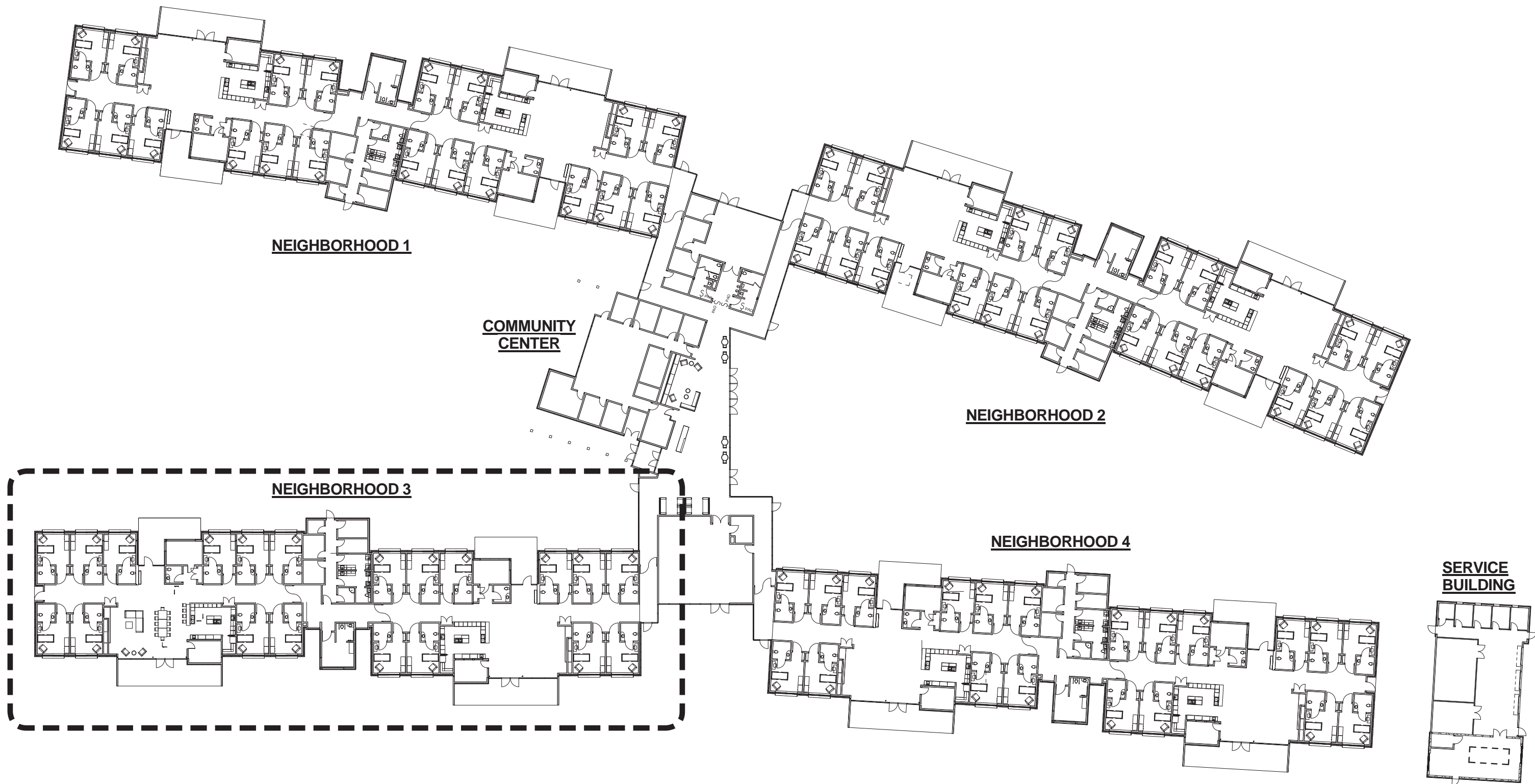
VIEW TOWARDS COMMUNITY CENTER FROM GARDEN





COMMUNITY CENTER









SITE ELEVATION TOWARDS LIVING AND MULTI-PURPOSE





NEIGHBORHOOD ELEVATION AT ENTRY



VIEW TOWARDS NEIGHBORHOOD ENTRY



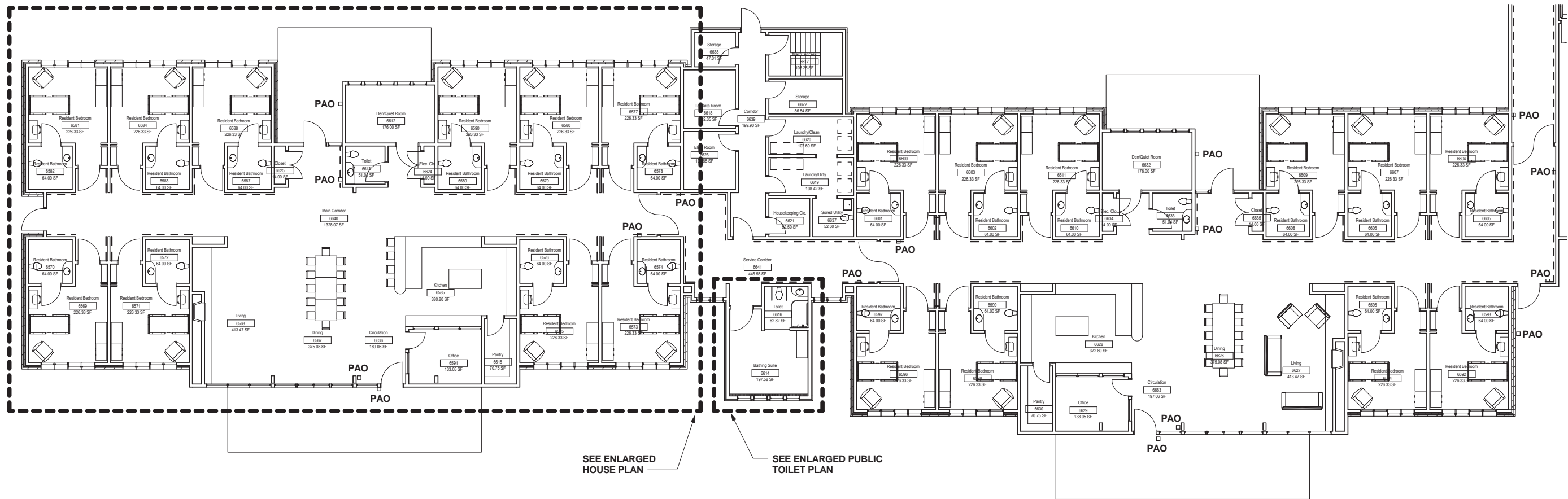




NEIGHBORHOOD ELEVATION AT LIVING



VIEW TOWARDS NEIGHBORHOOD LIVING





- PAO  POWER ASSIST DOOR OPERATOR  
- WALL MOUNTED
- PAO  POWER ASSIST DOOR OPERATOR  
- BOLLARD MOUNTED
- - - HANDRAIL - 34" A.F.F.





VIEW TOWARDS HOUSE ENTRY





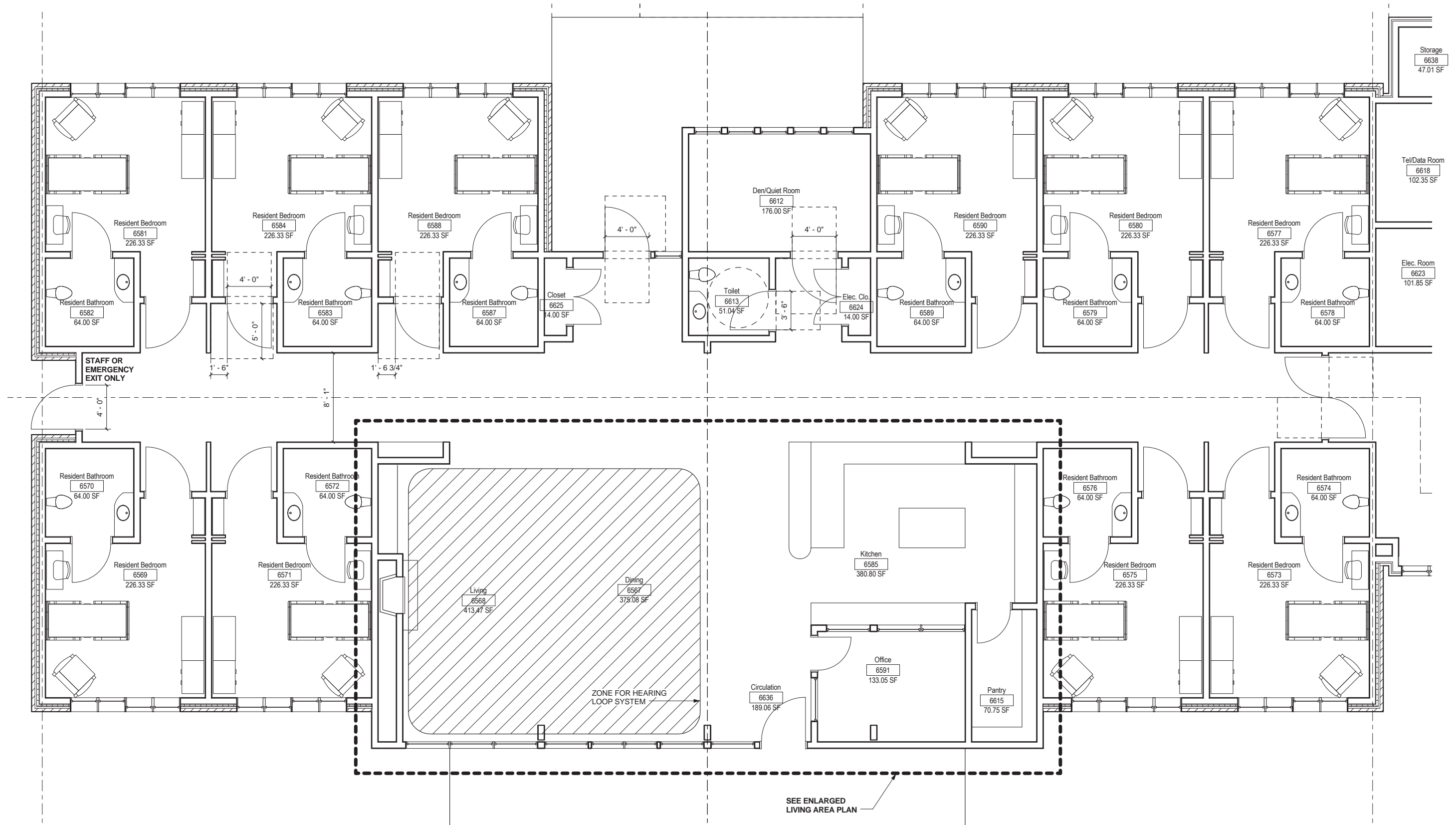
VIEW TOWARDS HOUSE LIVING AREA



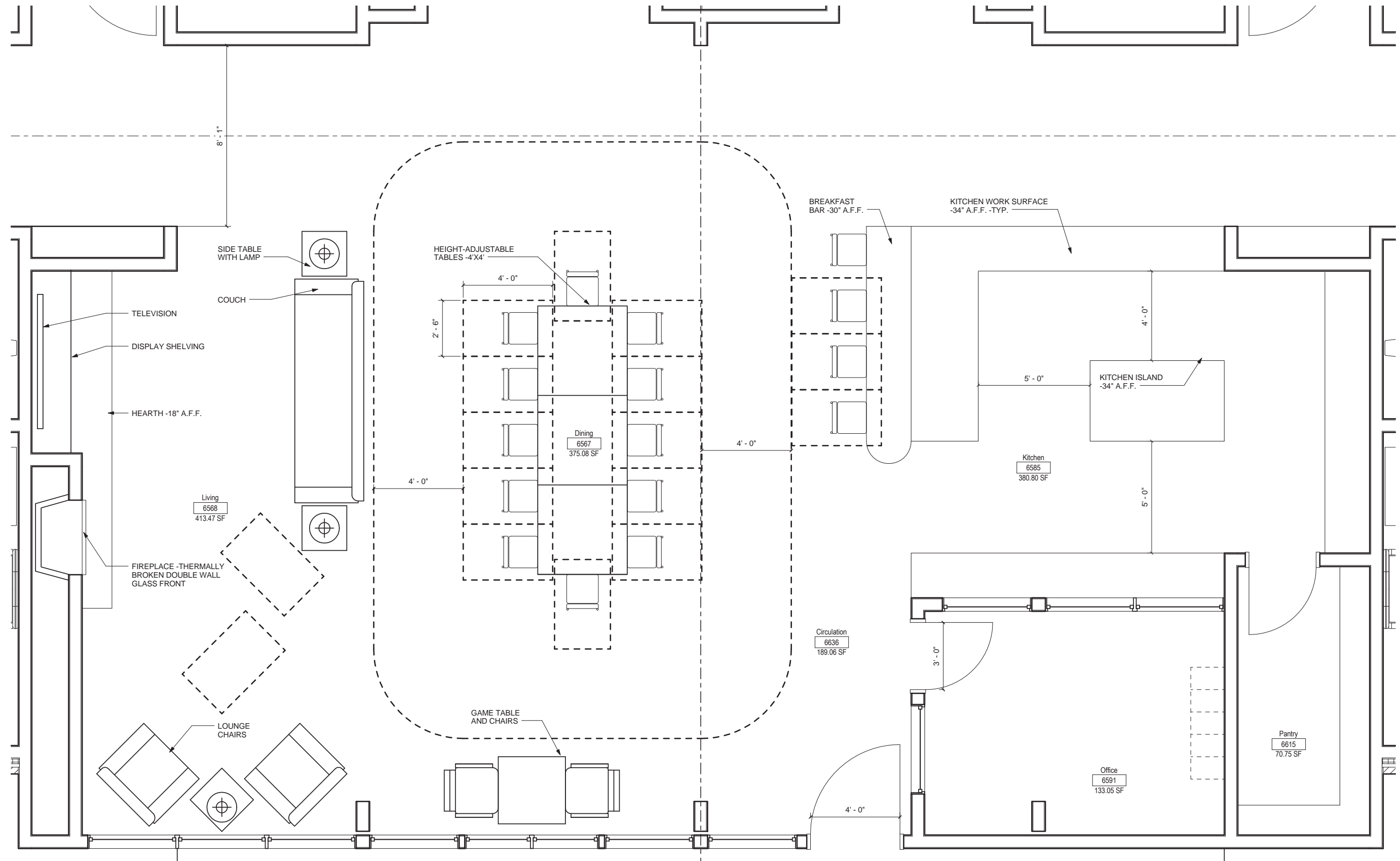


RENDERED FLOOR PLAN--LIVING AREA













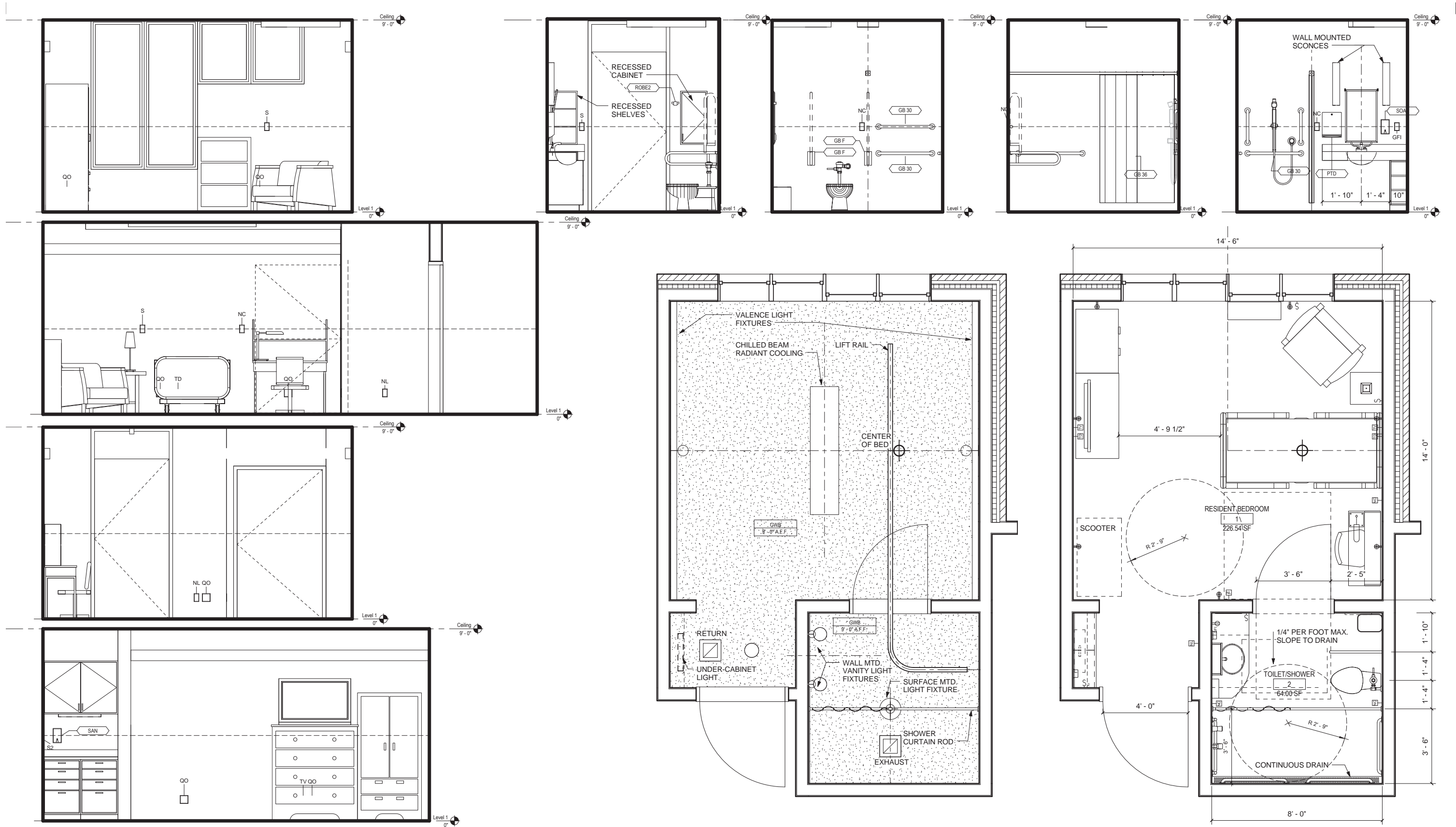
FIREPLACE VIEW





VIEW OF KITCHEN













INTERIOR MATERIALS